



Quick Vision Active Series

CNC Vision Measuring System

Easy-to-operate, space-saving model with advanced functionality to meet various needs



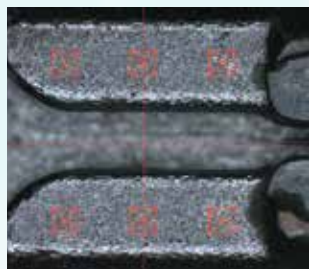
- ✓ High Efficiency
- ✓ Flexible Utility
- ✓ Simple but Advanced Platform

Fast & Accurate non-contact height measurement

Appropriately setting up the "image auto focus" function will enable reliable and high-speed height measurements.



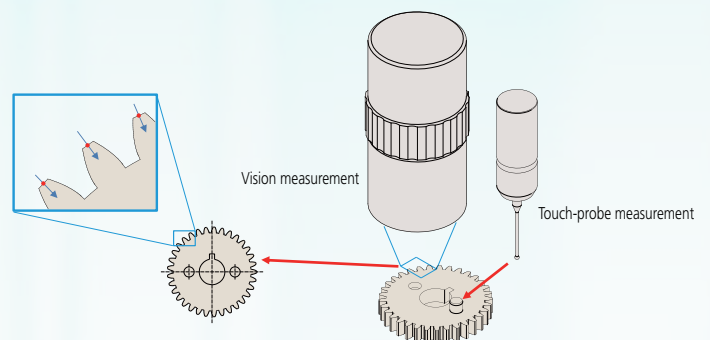
Surface focus tool



Multipoint auto focus tool

Vision/touch-probe combination measurement

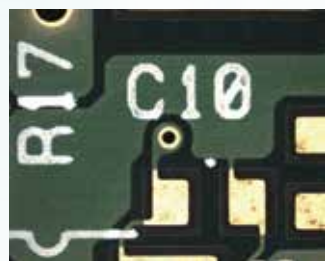
The QV Active series can perform complicated measurements that are usually made using tools such as calipers, dial indicators, or measuring microscopes.



Large screen with high-definition color image

High-definition color camera

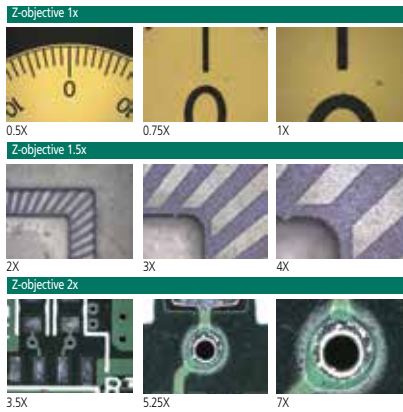
Measurement and observation is performed using high-quality and high-definition images, which prevents operator fatigue even over long periods of observation.



Vision measuring systems for multipurpose use

From wide view measurement to micro-measurement

The newly designed 7:1 ratio zoom unit and interchangeable objectives provide 0.5-7X optical magnification.



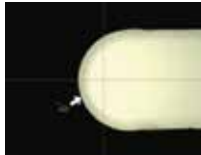
Optical magnification	0.5X	0.65X	0.75X	0.85X	0.98X	1X	1.28X	1.3X	1.5X	1.7X	2X	2.25X	2.5X	3X	3.5X	0.75X	4X	5X	5.25X	7X
View field Horizontal (H) (mm)	13.60	10.46	9.07	8.00	6.94	6.80	5.31	5.23	4.53	4.00	3.40	3.02	2.72	2.27	1.94	1.81	1.70	1.36	1.30	0.97
View field Vertical (V) (mm)	10.80	8.31	7.20	6.35	5.51	5.40	4.22	4.15	3.60	3.18	2.70	2.40	2.16	1.80	1.54	1.44	1.35	1.08	1.03	0.77
Z-Objective 1X Working distance	74mm																			
Z-Objective 1.5X Working distance	42mm																			
Z-Objective 2X Working distance	42mm																			



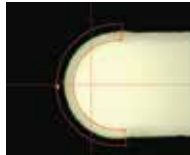
Easy-to-operate for beginners

One-click tool

After selecting the element to be measured (circle, line, etc.), just one click on an edge enables high-accuracy measurement regardless of the proficiency level of the operator. The outlier removal function automatically excludes bad data caused by burrs and dust.



Move the mouse to the edge and click once.



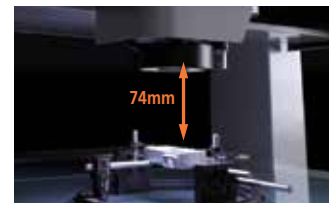
Executes high-accuracy multi-point measurement and removes the outlier

Large stepped features can be measured safely

Large working distance

A working distance of 74mm* practically eliminates the risk of damaging the objective or workpiece by accidental collision.

* Using the Z-objective 1X.



Recommended Option

Enlarge range of applications and increase measurement productivity

MeasurLink[®]
An Integrated Solution for Quality Data Management

Makes it possible to establish your **SMART FACTORY**



MeasurLink
Product Leaflet

Contact us for more details

Mitutoyo

Mitutoyo Asia Pacific Pte. Ltd.
Company Reg No. 197800892N
Tel: (65) 6294 2211 | Fax: (65) 6299 6666
Email: mapsg@mitutoyo.com.sg

www.mitutoyo.com.sg | www.mitutoyo.com.my
www.mitutoyo.co.th | www.mitutoyo.co.id
www.mitutoyo.com.vn | www.mitutoyo.com.ph

Mitutoyo (Malaysia) Sdn. Bhd.
Tel: (60) 3-7845 9318
Fax: (60) 3-7845 9346
E-mail: mmsb@mitutoyo.com.my

Mitutoyo (Thailand) Co., Ltd.
Tel: (66) 2080 3500
Fax: (66) 2521 6136
E-mail: office@mitutoyo.co.th

PT. Mitutoyo Indonesia
Tel: (62) 21-2962 8600
Fax: (62) 21-2962 8604
E-mail: ptmi@mitutoyo.co.id

Mitutoyo Vietnam Co., Ltd.
Tel: (84) 24-3768 8963
Fax: (84) 24-3768 8960
E-mail: mvc@mitutoyo.com.vn

Penang Branch
Tel: (60) 4-641 1998
Fax: (60) 4-641 2998

Chonburi Branch
Tel: (66) 2080 3563
Fax: (66) 3834 5788

Mitutoyo Philippines, Inc.
Tel & Fax: (63) 4-9544 0272
E-mail: mpi@mitutoyo.com.ph

Ho Chi Minh City Branch
Tel: (84) 28-3840 3489
Fax: (84) 28-3840 3498
E-mail: mvc@mitutoyo.com.vn

Johor Branch
Tel: (60) 7-352 1626
Fax: (60) 7-352 1628

Amata Nakorn Branch
Tel: (66) 2080 3565
Fax: (66) 3846 8978

