

CNC Contour and Surface Roughness Measuring Instrument

FORMTRACE EXTREME CS-H5000CNC

continuous top-bottom measurement system

Form Measurement



*Opening up a new stage in top and bottom
surface measurement*

CNC Contour and Surface Roughness Measuring Instrument

FORMTRACE EXTREME

CS-H5000CNC

continuous top-bottom measurement system



FEATURES

- Enables continuous measurement of top and bottom surface roughness, while also allowing form measurement, such as product thickness variation.
- 300mm column axis measuring range. Contour measurement using the column axis is possible.
- Various optional axis units can be affixed to improve measuring efficiency, for example with automatic leveling and horizontal alignment of measuring surfaces.

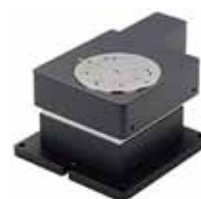
Optional Accessories for Automatic Measurement



Y-axis Table



Rotary Table θ 2-axis Unit



Small type θ 1-axis table with 3D & Auto Levelling Table

SPECIFICATIONS

Measuring range / Resolution	X-axis	200mm/0.00625 μ m
	Z1-axis	Standard stylus: 12mm/0.0008 μ m, 2xlong stylus: 24mm/0.0016 μ m
	Z2-axis	300mm/0.05 μ m
Indication Accuracy (20°C)	X-axis	$\pm (0.16+0.001L) \mu$ m L: Measuring length (mm)
	Z1-axis	$\pm (0.07+[0.02H]) \mu$ m H: Measurement height from the horizontal position (mm)
	Z2-axis	$\pm (1.5+10H/1000) \mu$ m H: Z2-axis measurement height (mm)
Measuring force	Standard stylus: 4mN constant, 2xlong stylus: 0.75mN constant	
Drive speed	X axis: Max 40 mm/s, Z2 axis: Max 200 mm/s	



Mitutoyo Asia Pacific Pte. Ltd.

Company Reg No. 197800892N
 24 Kallang Avenue, Mitutoyo Building, Singapore 339415
 Tel: (65) 6294 2211 Fax: (65) 6299 6666
 E-mail: mapsg@mitutoyo.com.sg



www.mitutoyo.com.sg

Mitutoyo (Malaysia) Sdn. Bhd.

Mah Sing Integrated Industrial Park,
 4, Jalan Utarid U5/14, Section U5,
 40150 Shah Alam, Selangor, Malaysia
 Tel: (60)3-7845 9318
 Fax: (60)3-7845 9346
 E-mail: mmsb@mitutoyo.com.my
Penang Branch
 Tel: (60)4-641 1998 Fax: (60)4-641 2998
 E-mail: mmsbpen@mitutoyo.com.my
Johor Branch
 Tel: (60)7-352 1626 Fax: (60)7-352 1628
 E-mail: mmsbjhr@mitutoyo.com.my

Mitutoyo (Thailand) Co., Ltd.

76/3-5, Chaengwattana Road, Kwaeng
 Anusaowaree, Khet Bangkaen,
 Bangkok 10220, Thailand
 Tel: (66)2-521 6130
 Fax: (66)2-521 6136
 E-mail: office@mitutoyo.co.th
Chonburi Branch
 Tel: (66)3-834 5783 Fax: (66)3-834 5788
Amata Nakorn Branch
 Tel: (66)3-846 8976 Fax: (66)3-846 8978

PT. Mitutoyo Indonesia

Jalan Sriwijaya No.26 Desa cibatu
 Kec. Cikarang Selatan Kab.
 Bekasi 17530, Indonesia
 Tel: (62)21-2962 8600
 Fax: (62)21-2962 8604
 E-mail: ptmi@mitutoyo.co.id

Mitutoyo Vietnam Co., Ltd.

No. 07-TT4, My Dinh - Me Tri Urban Zone,
 My Dinh 1 Ward, Nam Tu Liem District,
 Hanoi, Vietnam
 Tel: (84)4-3768 8963
 Fax: (84)4-3768 8960
 E-mail: mvc-hn@mitutoyo.com.vn
Ho Chi Minh City Branch
 Tel: (84)8-3517 4561
 Fax: (84)8-3517 4582
 E-mail: mvc-hcmc@mitutoyo.com.vn

Mitutoyo Philippines, Inc.

Unit 2103, GMV Building 2,
 107 North Main Avenue,
 Laguna Technopark, Biñan,
 Laguna 4024, Philippines
 Tel: (63)49-544 0272
 Fax: (63)49-544 0272
 E-mail: mpi@mitutoyo.com.ph